

# NW Amber & SW Townships Mason County



## 2019 HMA Surfacing

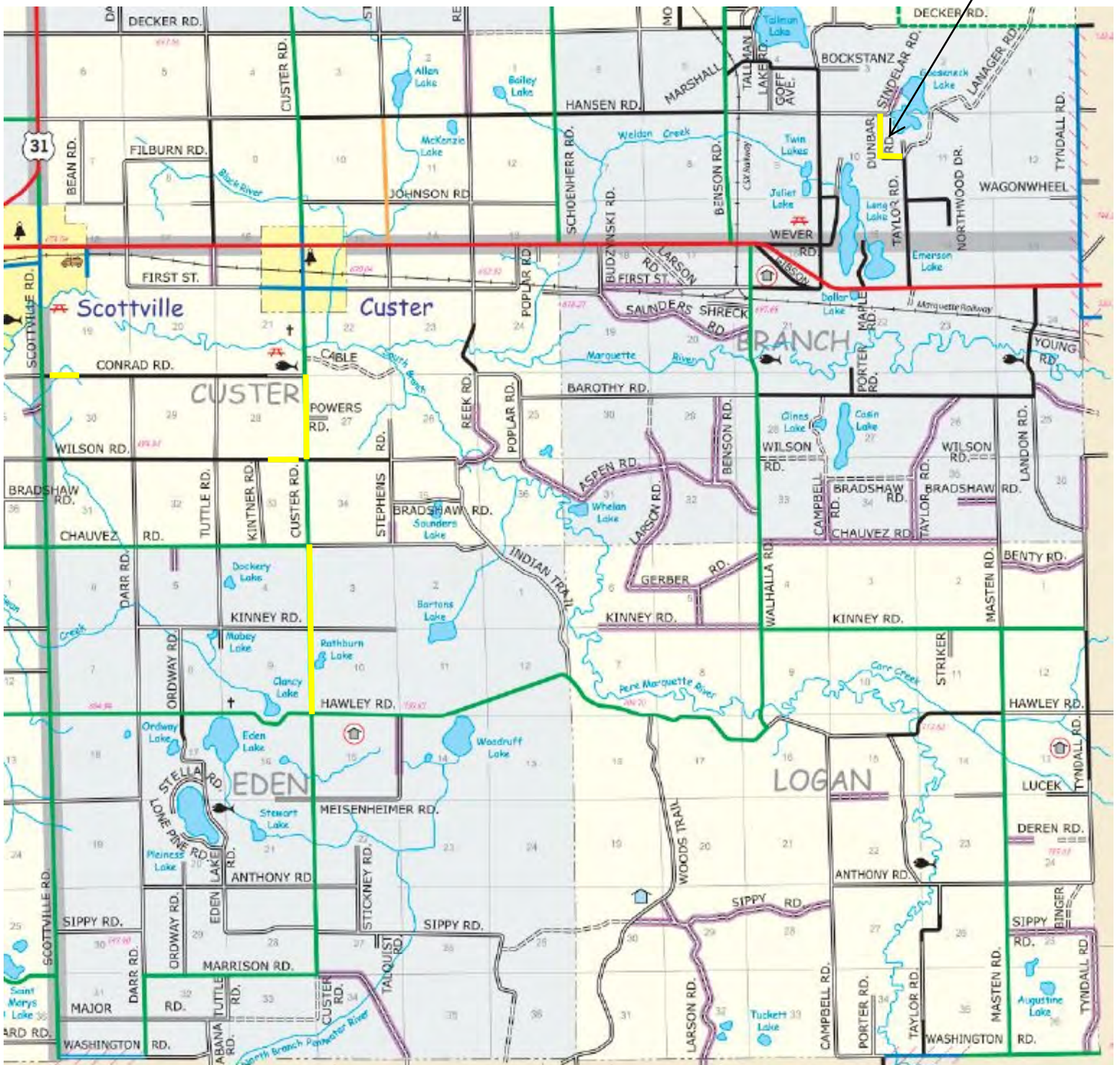
— Approximate Location





# SE Townships Mason County

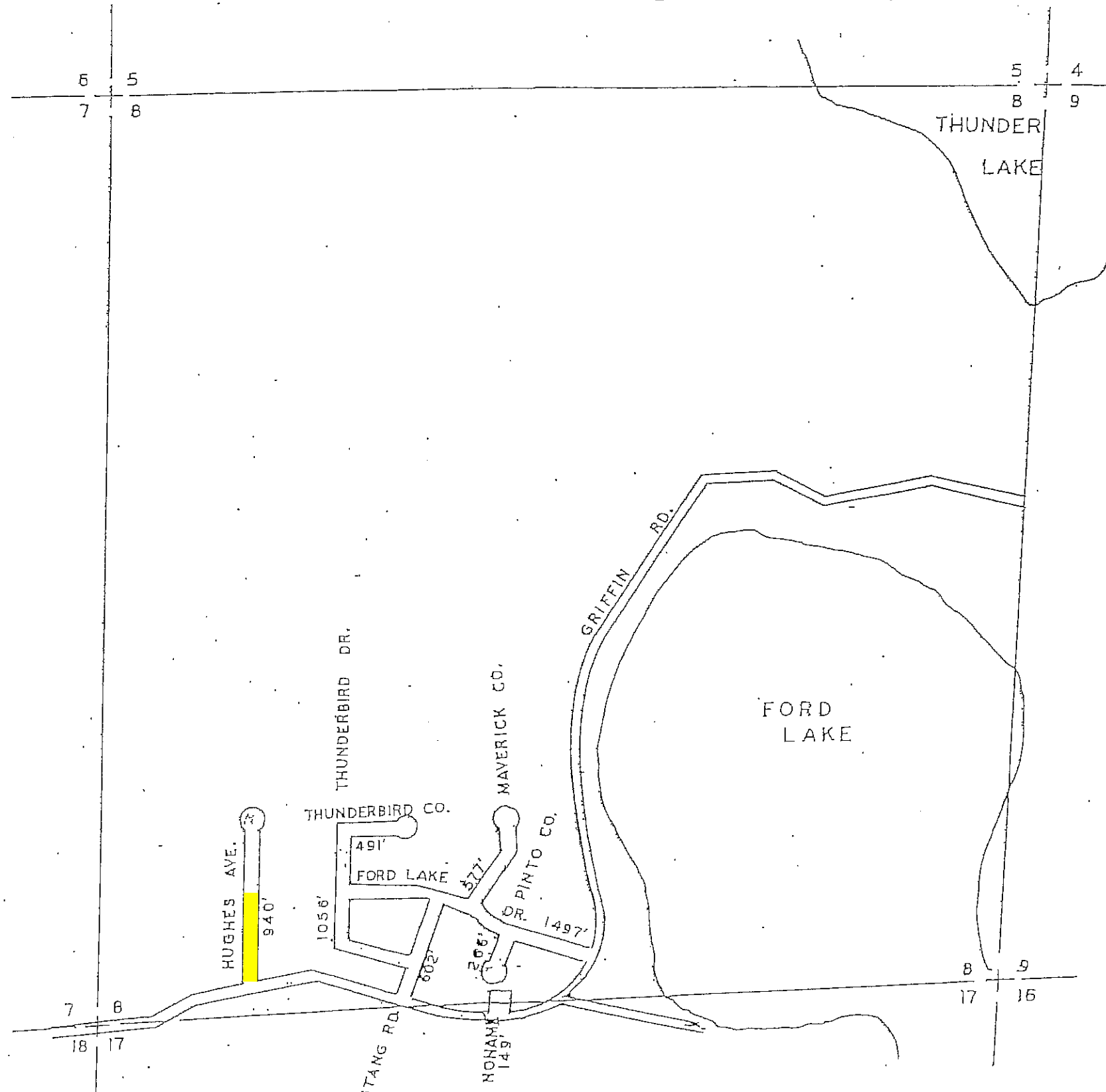
See Branch TWSP Page 29



## 2019 HMA Surfacing

— Approximate Location

# NE Townships Mason County



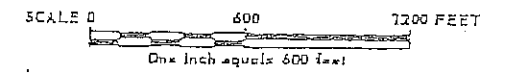
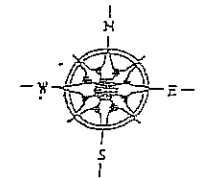
LEGEND

COUNTY LINE	-----
CORPORATE LIMITS	-----
STATE TRUNKLINE	=====
COUNTY PRIMARY	-----
COUNTY LOCAL	-----
ADJACENT COUNTY	#####
CITY OR VILLAGE STREET	-----

TOTAL FEET 5578 EQUALS 1.06 MILES

I HEREBY CERTIFY THAT THE ROADS SHOWN HEREON BY SYMBOL OR IN GREEN AS LOCAL ROADS ARE IN USE AND ARE UNDER THE JURISDICTION OF THE COUNTY ROAD COMMISSION.

CHAIRMAN \_\_\_\_\_ DATE \_\_\_\_\_



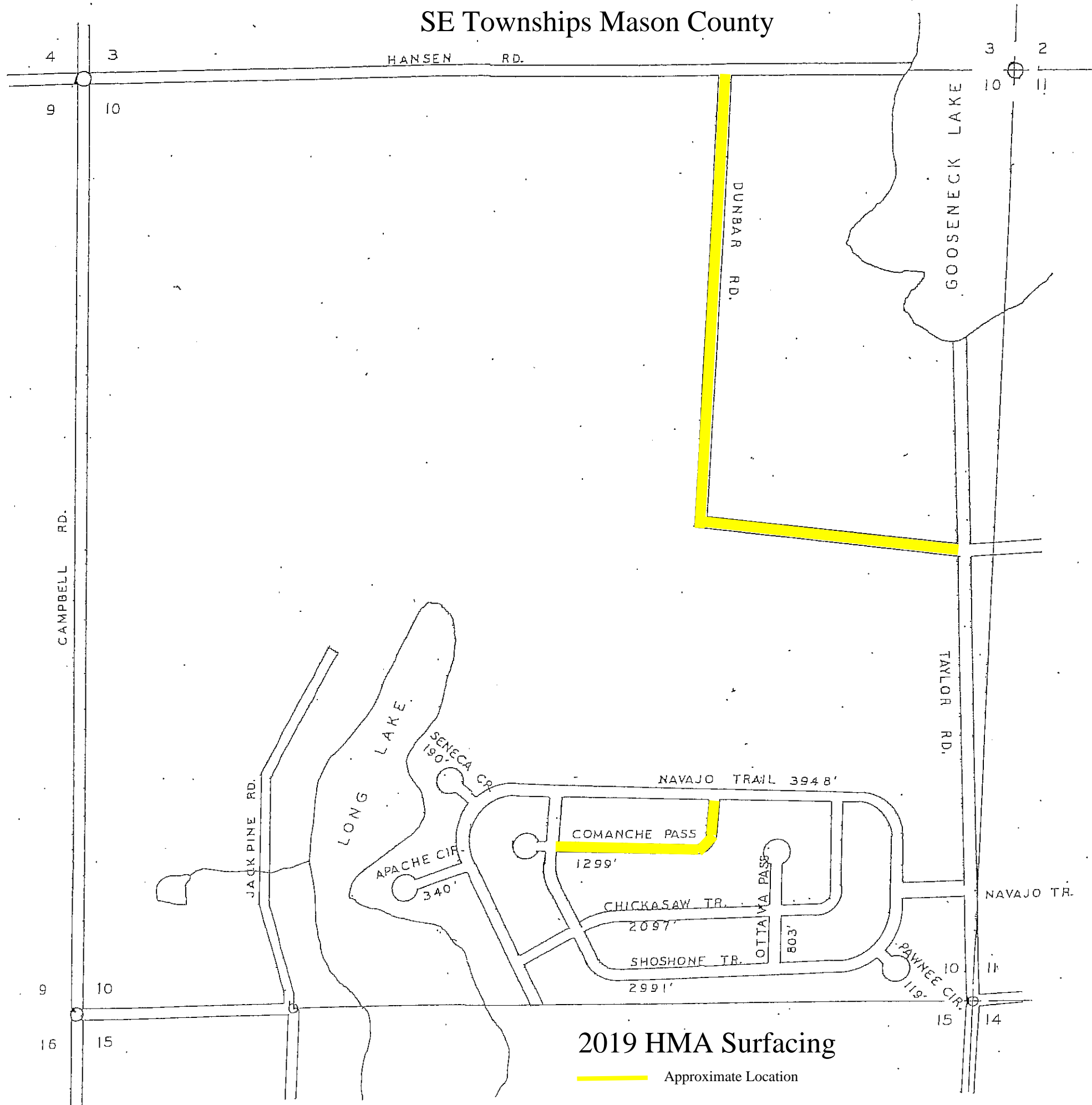
TOWNSHIP SHERIDAN  
 SECTION 8 T. 19 N R. 15 W.  
 COUNTY MASON

2019 HMA Surfacing

Approximate Location

SHERIDAN TWP. 47.

# SE Townships Mason County

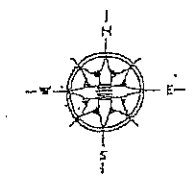


LEGEND  
 COUNTY LINE  
 CORPORATE LIMITS  
 STATE TOWNLINE  
 COUNTY PRIMARY  
 COUNTY LOCAL  
 ADJACENT COUNTY  
 CITY OR VILLAGE STREET

TOTAL FEET 11,787 EQUALS 2.23 MILES

I HEREBY CERTIFY THAT THE ROADS SHOWN HEREON BY SYMBOL OR IN GREEN AS LOCAL ROADS ARE IN USE AND ARE UNDER THE JURISDICTION OF THE COUNTY ROAD COMMISSION.

CHAIRMAN \_\_\_\_\_ DATE \_\_\_\_\_



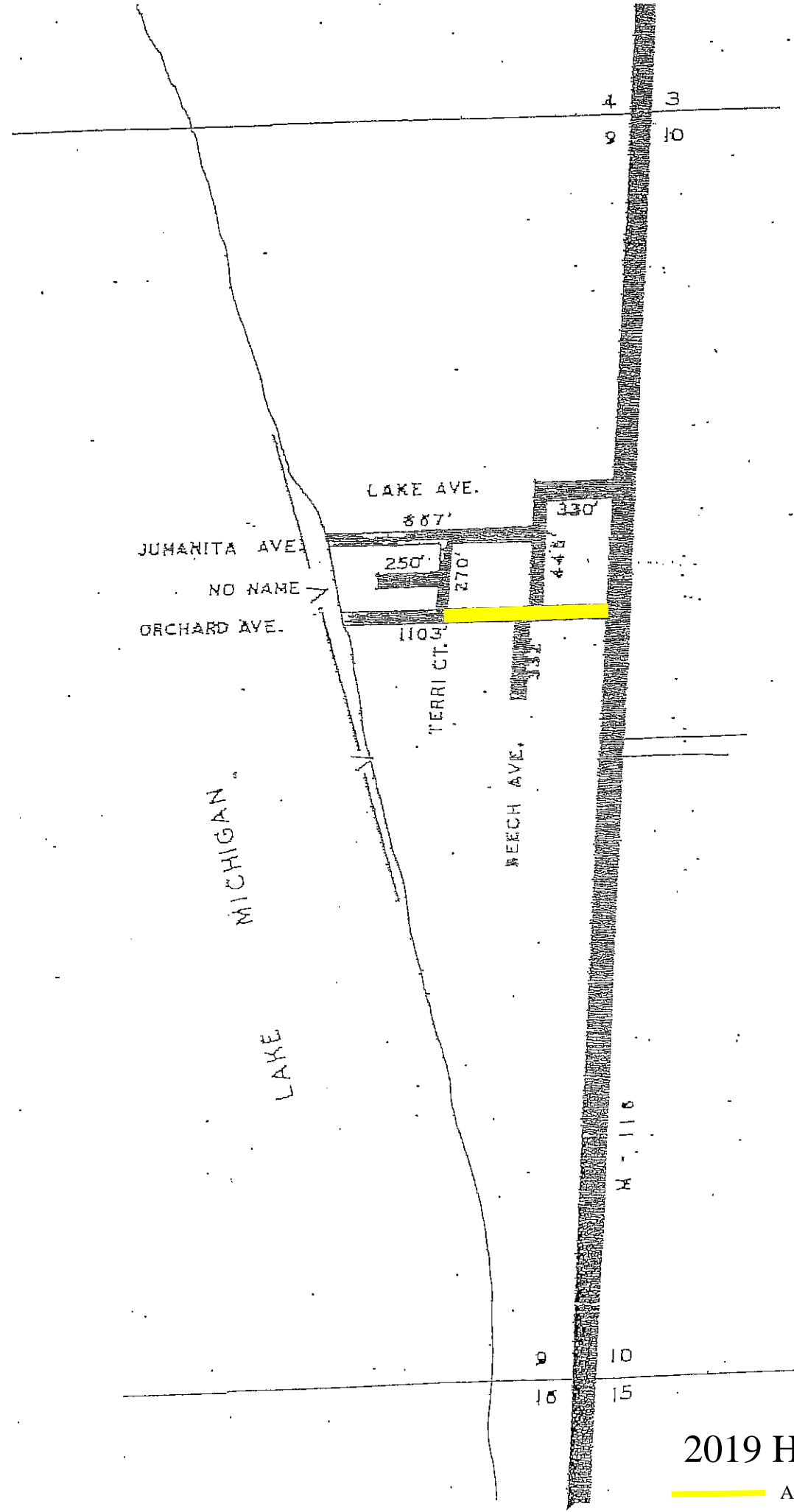
SCALE 0 500 1000  
 One inch equals 500 FEET

TOWNSHIP BRANCH  
 SECTION 10 T18N R15W  
 COUNTY MASON

**2019 HMA Surfacing**  
 ———— Approximate Location

**BRANCH TWP. 29.**

# SW Townships Mason County

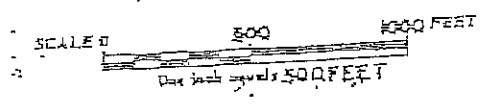
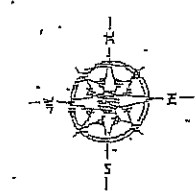


LEGEND

COUNTY LINE	---
CORPORATE LIMITS	---
STATE TRUNKLINE	---
COUNTY PRIMARY	---
COUNTY LOCAL	---
ADJACENT COUNTY	---
CITY OR VILLAGE STREET	---
URBAN LOCAL ROAD SYSTEM	
TOTAL FEET 3597. EQUALS 0.68 MILES	

I HEREBY CERTIFY THAT THE ROADS SHOWN HEREON BY SYMBOL OR IN GREEN AS LOCAL ROADS ARE IN USE AND ARE UNDER THE JURISDICTION OF THE COUNTY ROAD COMMISSION.

CHIEFMAN \_\_\_\_\_ DATE \_\_\_\_\_



TOWNSHIP PERE MARQUETTE  
SECTION 9 T. 18N R. 15W  
COUNTY MASON

2019 HMA Surfacing

Approximate Location

URBAN PERE MARQUETTE TWP. 7.

# SW Townships Mason County

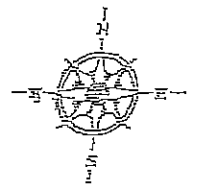
LEGEND

COUNTY LINE	—————
CORPORATE LIMITS	—————
STATE TRUNKLINE	—————
COUNTY PRIMARY	—————
COUNTY LOCAL	—————
ADJACENT COUNTY	—————
CITY OR VILLAGE STREET	—————

TOTAL FEET 11079 EQUALS 2.1 MILES

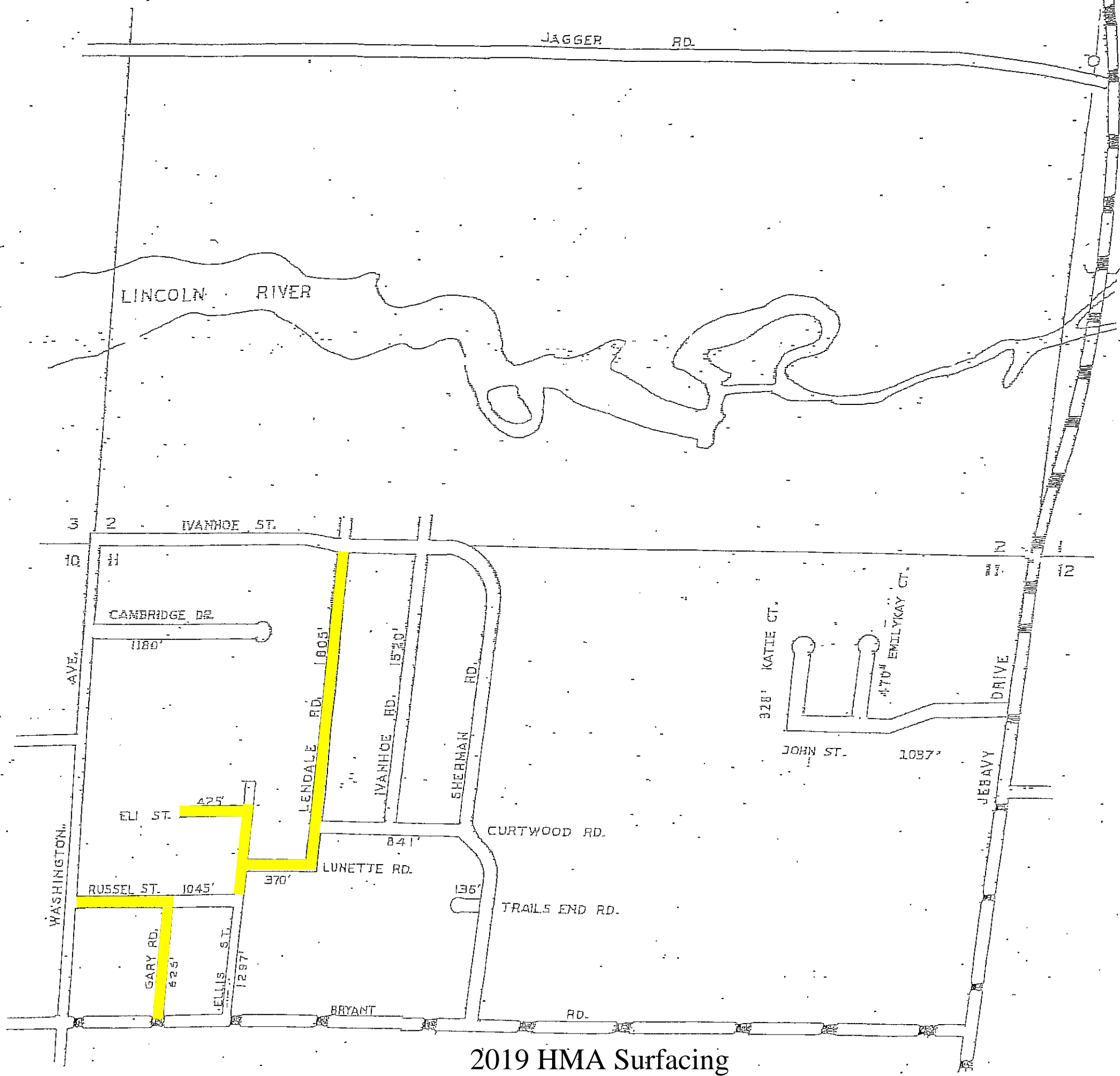
I HEREBY CERTIFY THAT THE ROADS SHOWN HEREON BY SYMBOL OR IN GREEN AS LOCAL ROADS ARE ON USE AND ARE UNDER THE JURISDICTION OF THE COUNTY ROAD COMMISSION.

CHAIRMAN \_\_\_\_\_ DATE \_\_\_\_\_



SCALE 0 500 1000 FEET  
One inch equals 1500 feet

TOWNSHIP PERE MARQUETTE  
SECTION 11 - 18N - 18W  
COUNTY MASON



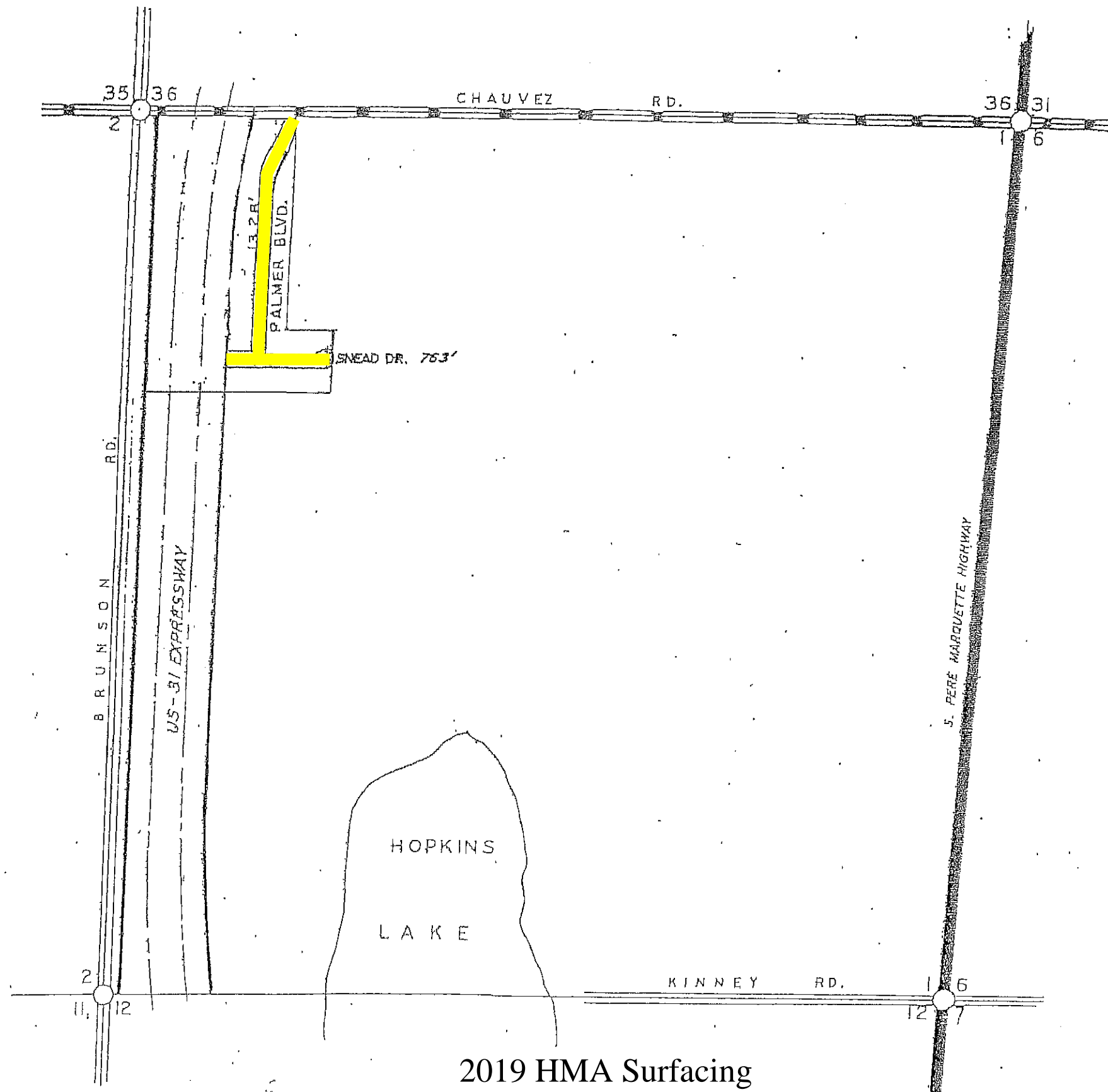
2019 HMA Surfacing

— Approximate Location

URBAN PERE MARQUETTE TWP. 8.



# SW Townships Mason County



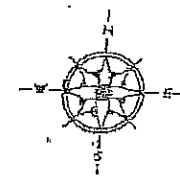
LEGEND

COUNTY LINE	-----
CORPORATE LIMITS	-----
STATE TRUNKLINE	-----
COUNTY TRUNKLINE	-----
COUNTY LOCAL	-----
ADJACENT COUNTY	-----
CITY OR VILLAGE STREET	-----

TOTAL FEET 2091 EQUALS 0.40 MILES

I, HEREBY CERTIFY THAT THE ROADS SHOWN HEREON BY SYMBOL OR IN GREEN AS LOCAL ROADS ARE IN USE AND ARE UNDER THE JURISDICTION OF THE COUNTY ROAD COMMISSION.

CHAIRMAN DATE



SCALE 0 400 1200 FEET  
One inch equals 600 feet

TOWNSHIP PERE MARQUETTE  
SECTION 1 17 & 18  
COUNTY MASON

2019 HMA Surfacing

Approximate Location

PERE MARQUETTE TWP. 10.